

# Your Choice of Residences





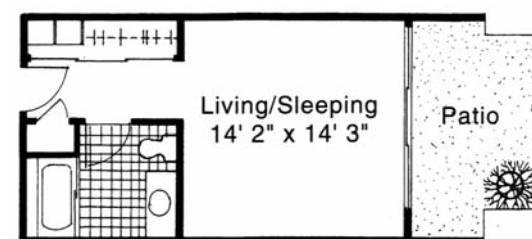


## For One Resident Only

You will find a variety of homes to choose from at Mt. San Antonio Gardens, from spacious two bedroom homes to efficient studios. The homes at the Gardens are imbued with an open, California style, featuring post and beam accents which reflect the Arts and Crafts Movement of more than a century ago. The architectural design includes high ceilings, large windows and generous patios and balconies, complementing the beautifully landscaped campus.

Some residences are designed specifically for one resident, others are for either one or two, and some are available for two residents only. The type of home you select, as well as your age, will determine your Founders Fee (entry fee).

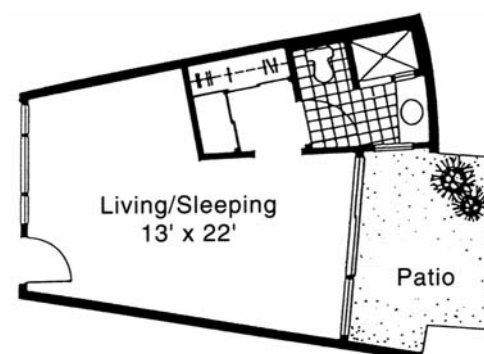
Because many of the homes are in high demand, we suggest that you submit your application for residence, along with your choice of residence, as early as possible. To help you make your selection, we invite you to schedule a personal tour of the Gardens.



### Studio

A, B, or C Buildings 375 Sq. Ft.

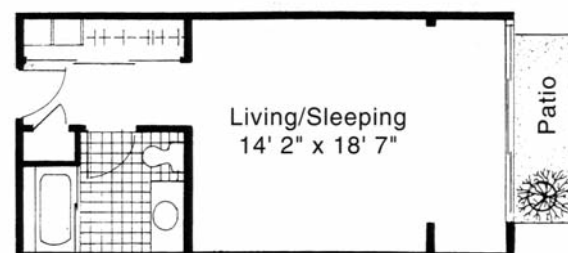
- Living/sleeping room
- Large bath with tub/shower combination or shower only
- Patio



### Circle Studio

A, B, or C Buildings 400 Sq. Ft.

- Courtyard entrance
- Spacious living/sleeping room
- Bath with shower only
- Separate dressing area with large closet
- Patio



### Studio

A, B, or C Buildings 430 Sq. Ft.

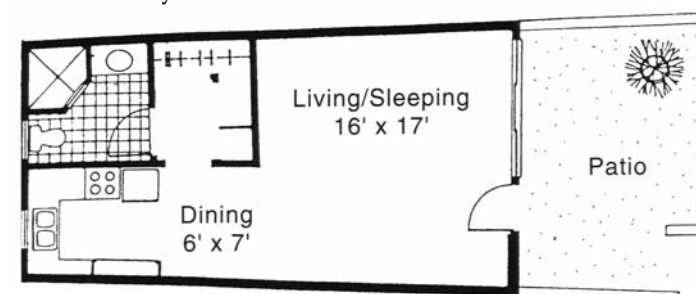
- Extended living/sleeping room
- Large bath with tub/shower combination or shower only
- Patio



### Studio

D Building 470 Sq. Ft.

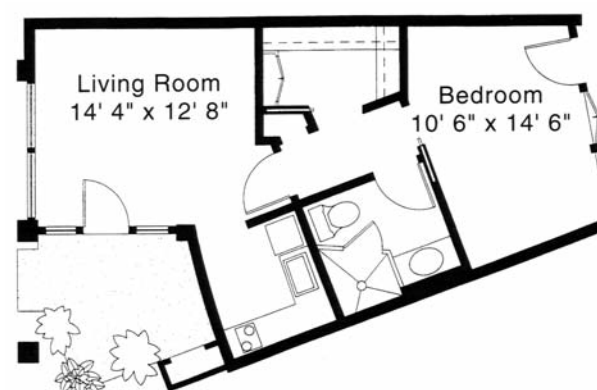
- Extended living/sleeping room
- Large bath with tub/shower combination or shower only
- Balcony



### Efficiency Apartment

F Building 470 Sq. Ft.

- Spacious living/sleeping room
- Fully equipped kitchen with dining area
- Bath with shower only
- Separate dressing area with large closet
- Enclosed patio



### Circle Apartment

A, B or C Buildings 565 Sq. Ft.

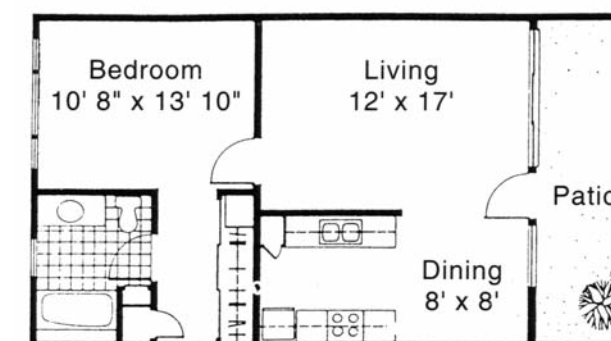
- Living room with vaulted ceiling/clerestory windows
- Separate, fully equipped kitchen
- Bath with shower only
- Large walk-in closet
- Bedroom with exterior entrance/exit to courtyard



### One Bedroom Apartment

The Terraces 625 Sq. Ft.

- Living room with patio
- Fully equipped kitchen
- Bath with shower only
- Bedroom with walk-in closet



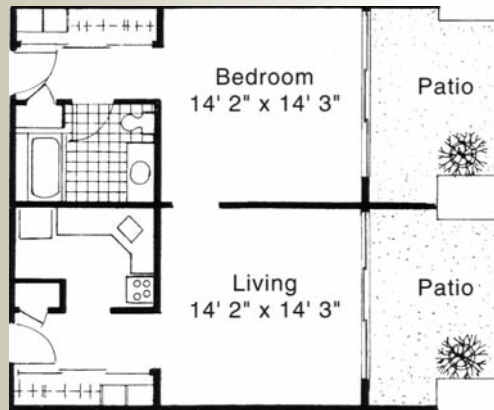
### One Bedroom Apartment

E or F Buildings 650 Sq. Ft.

- Living room with patio
- Fully equipped kitchen
- Dining area
- Bath with tub/shower combination or shower only
- Dressing area with large closet



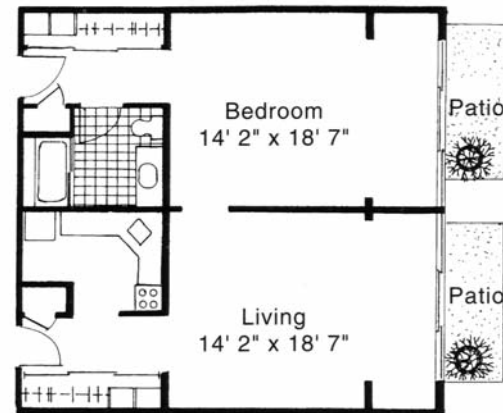
# For One or Two Residents



## One Bedroom Apartment

A, B or C Buildings No. 1 750 Sq. Ft.

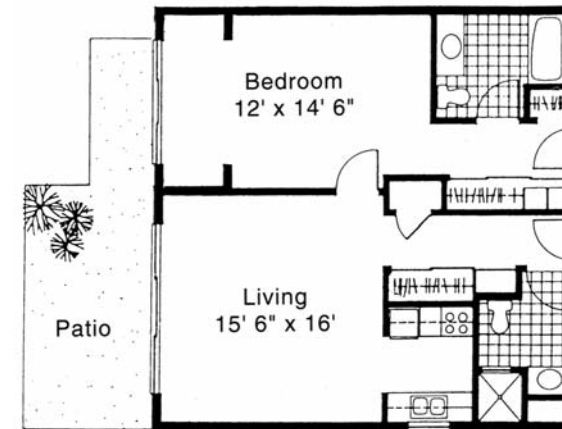
- Living room with patio
- Separate, fully equipped kitchen
- Bedroom with patio
- Bath with tub/shower combination or shower only



## One Bedroom Apartment

A, B or C Buildings No. 2 800 Sq. Ft.

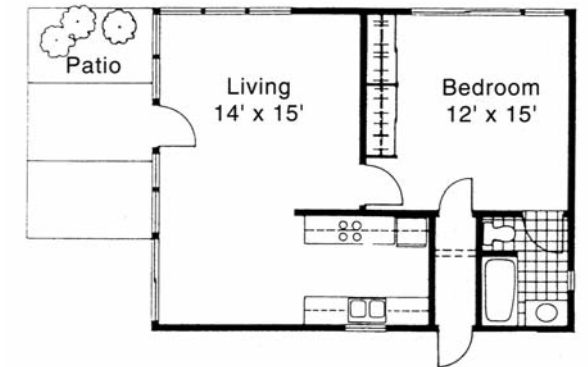
- Extended living room with patio
- Separate, fully equipped kitchen
- Extended bedroom with patio
- Bath with tub/shower combination or shower only



## Full Suite

A, B, C or D Buildings 830 Sq. Ft.

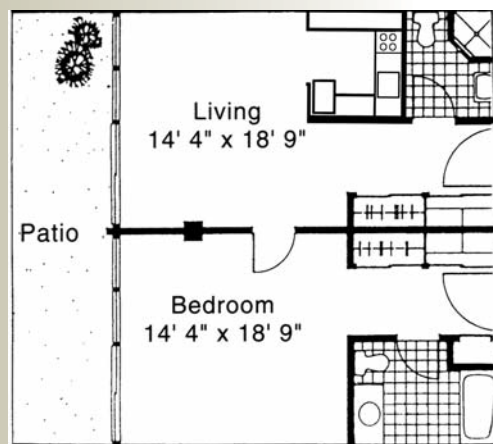
- Living room with patio or balcony
- Fully equipped kitchen
- Bedroom with patio or balcony
- Two baths, one with tub/shower combination & one with shower only



## One Bedroom Cottage

Plan C 717 Sq. Ft.\*

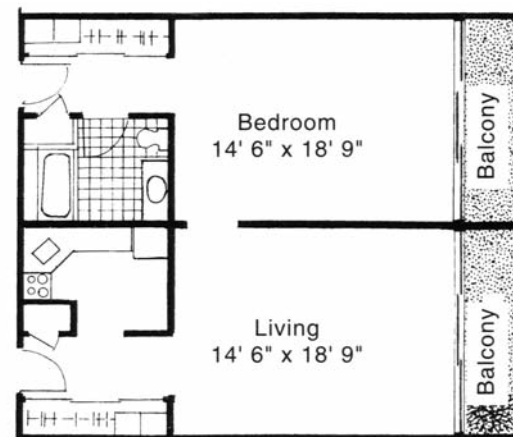
- Living room with large patio
- Fully equipped kitchen with dining area
- Bedroom
- Bath with tub/shower combination or shower only



## Garden Suite

D Building 800 Sq. Ft.

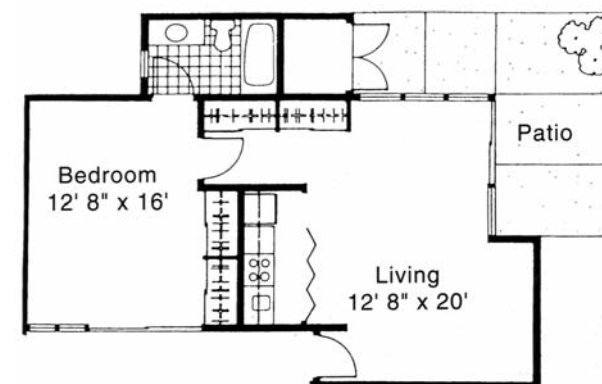
- Living room with patio
- Fully equipped kitchen
- Bedroom with patio
- Two baths, one with tub/shower combination & one with shower only



## One Bedroom Apartment

D Building 830 Sq. Ft.

- Living room with balcony
- Separate, fully equipped kitchen
- Bedroom with balcony
- Bath with tub/shower combination or shower only



## One Bedroom Cottage

Plan A 759 Sq. Ft.\*

- Living room with patio
- Fully equipped kitchen
- Bedroom
- Bath with tub/shower combination or shower only



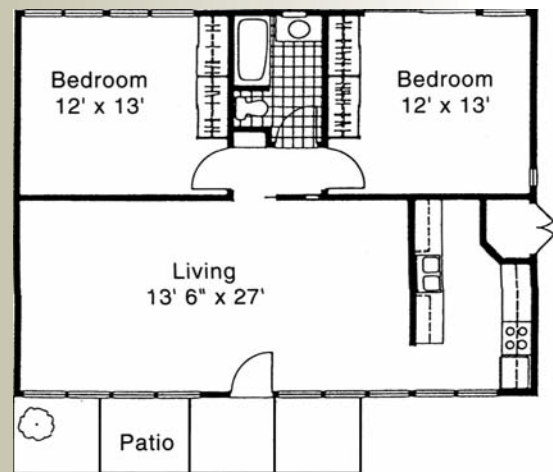
## One Bedroom Cottage

Plan E 836 Sq. Ft.\*

- Living room with large patio
- Separate, fully equipped kitchen with dining area
- Bedroom with separate dressing area
- Bath with tub/shower combination or shower only

\*Many cottages have been expanded; sizes listed are for original floorplans only.

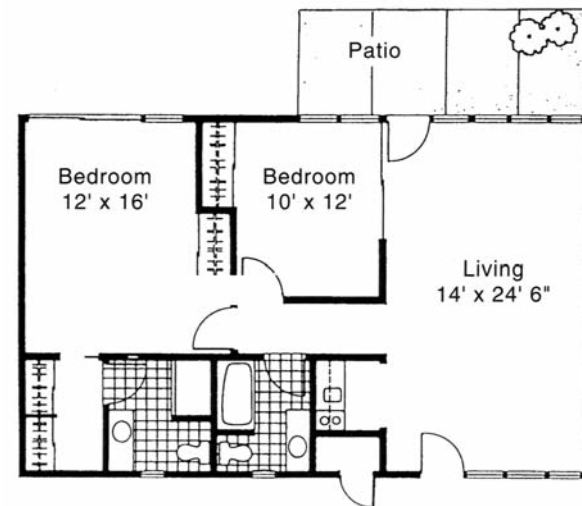
## For One or Two Residents



### Two Bedroom Cottage

Plan A 1,036 Sq. Ft.\*

- Living room with patio
- Separate, fully equipped kitchen with dining area
- Two bedrooms
- One bath with tub/shower combination

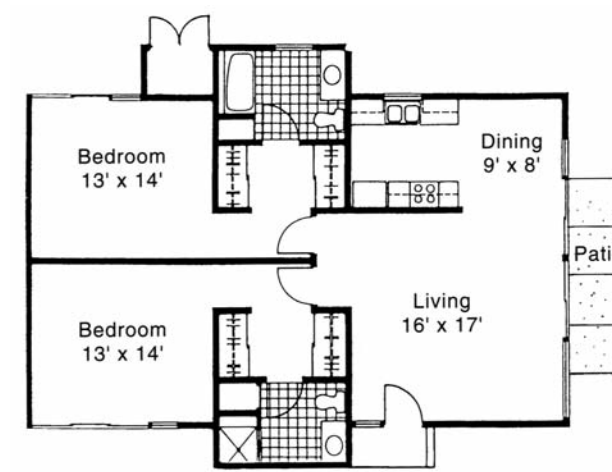


### Two Bedroom Cottage

Plan Is 1,050 Sq. Ft.\*

- Living room with cathedral ceiling clerestory windows & patio
- Fully equipped kitchen and dining area
- Two bedrooms
- Two baths, one with tub/shower combination & one with shower only

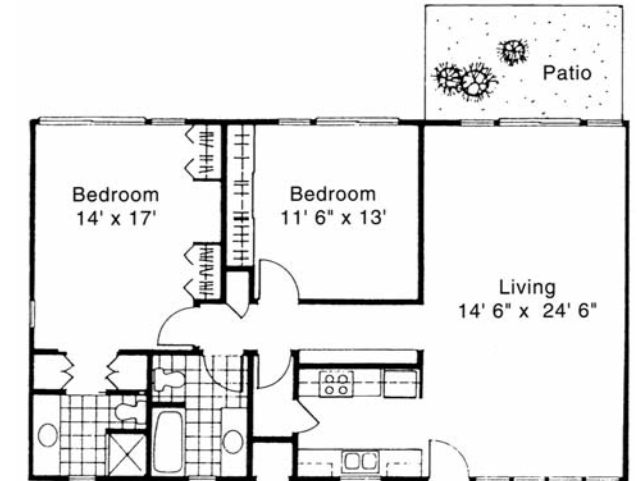
## For Two Residents Only



### Two Bedroom Cottage

Pomona Plan 1,180 Sq. Ft.\*

- Living room with vaulted ceiling clerestory windows & patio
- Separate, fully equipped kitchen with dining area
- Two bedrooms with separate dressing areas
- Two baths, one with tub/shower combination & one with shower only
- Attached garage



### Two Bedroom Cottage

Plan I 1,250 Sq. Ft.\*

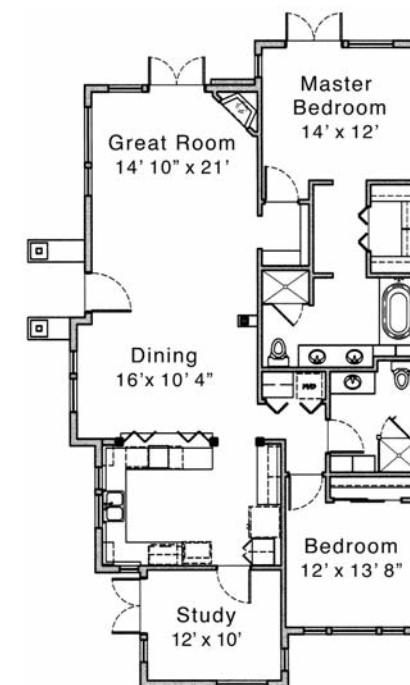
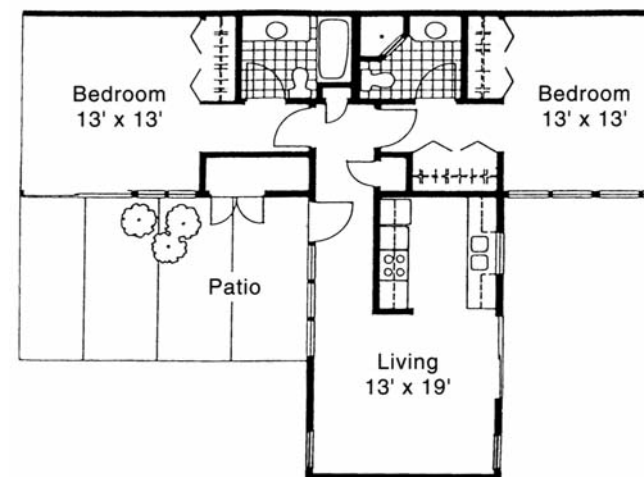
- Living room with cathedral ceiling/clerestory windows & patio
- Fully equipped kitchen
- Two bedrooms
- Two baths, one with tub/shower combination & one with shower only

## For Two Residents Only

### Two Bedroom Cottage

Plan H 1,070 Sq. Ft.\*

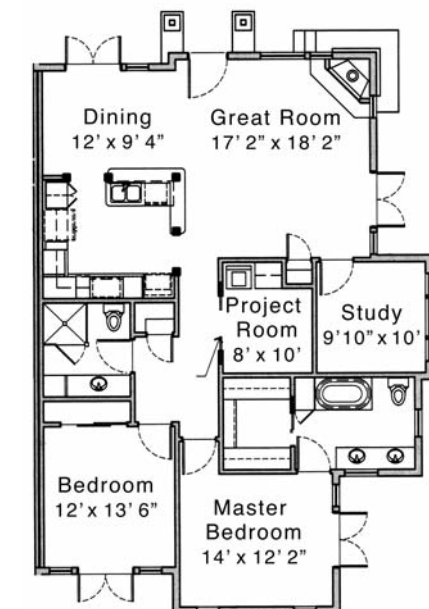
- Living room with patio
- Fully equipped kitchen
- Two bedrooms
- Two baths, one with tub/shower combination & one with shower only



### Two Bedroom Terrace Home

Willow Plan 1,470 Sq. Ft.\*

- Large, open great room with cathedral ceiling & dining area
- Open, fully equipped kitchen
- Study for office/projects
- Two bedrooms; walk-in closet in master bedroom
- Two baths; one with tub and shower & one with shower only



### Two Bedroom Terrace Home

Redwood Plan 1,480 Sq. Ft.\*

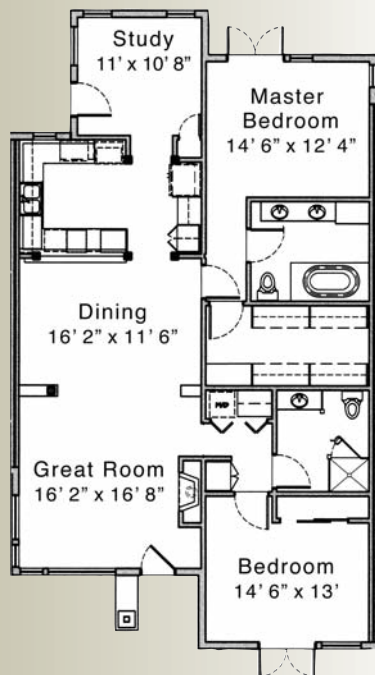
- Large, open great room with cathedral ceiling & dining area
- Open, fully equipped kitchen
- Study and Project Room
- Two bedrooms; walk-in closet in master bedroom
- Two baths; one with tub/shower combination & one with shower only

\*Many cottages have been expanded; sizes listed are for original floorplans only.

\*Many cottages and homes have been expanded; sizes listed are for original floorplans only.



# For Two Residents Only

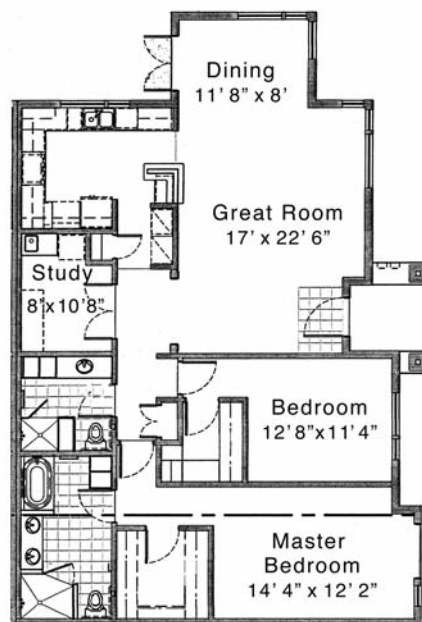


## Two Bedroom Terrace Home

*Sycamore Plan*  
1,530 Sq. Ft.\*

- Large, open great room with cathedral ceiling & dining area
- Open, fully equipped kitchen
- Study for office/projects
- Two bedrooms; walk-in closet in master bedroom
- Two baths; one with tub/shower combination & one with shower only

\*Many homes have been expanded; sizes listed are for original floorplans only.



## Two Bedroom Terrace Home

*Maple Plan*  
1,550 Sq. Ft.\*

- Large, open great room with cathedral ceiling & dining area
- Open, fully equipped kitchen
- Study for office/projects
- Two bedrooms; walk-in closet in master bedroom
- Two baths; one with tub and shower & one with shower only



## Licensing & Accreditation

Mt. San Antonio Gardens is licensed by the California Department of Public Health and the California Department of Social Services; certified as a Medicare provider; and accredited by the Commission on Accreditation of Rehabilitation Facilities/Continuing Care Accreditation Commission. The Gardens is a member of LeadingAge of California and the national LeadingAge association.

Mt. San Antonio Gardens welcomes individuals without regard to age, gender, race, disability, religion, nationality, sexual orientation, or any other class that is protected by the law.



900 E. Harrison Avenue, Pomona, CA 91767

909.399.1208

info@msagardens.org www.msagardens.org



State Licensed RCFE 191500496 COA #078