



INDEPENDENT LIVING

Floor Plans and Pricing

2655 W. National Road, Springfield, Ohio 45504 | (937) 525-3067 | www.smcoho.org

WHERE LIFESTYLE SPARKS NEW BEGINNINGS



TABLE OF CONTENTS

Garden Villas	3
Phase I Villa	4
Phase II Villa	5
Phase II Duplex	5
Scottish Right Apartments	7
Studio Apartment Floor Plan A	8
One Bedroom Apartment Floor Plan E	9
One Bedroom Apartment Floor Plan D	10
Two Bedroom Apartment Floor Plan F	11
Two Bedroom Apartment Floor Plan G	12
Two Bedroom Apartment Floor Plan H	13
Iredell Gardens Apartments	14
One Bedroom Apartment	15
Two Bedroom Apartment	15
Cost Comparison	16

GARDEN VILLAS

at Masonic Square



Our Garden Villas feature scenic views with beautiful finishes. Offering three modern and spacious floor plans, for those who want to maintain their active independence, while pursuing a secure, maintenance free lifestyle.

Rates include:

- Kitchen appliances
- Trash removal
- Maintenance Free Living (inside and outside)
- Basic cable television
- 24-hour security
- Water
- Sewer
- Property taxes
- Access to activities

Community members are responsible for phone, gas, electric and internet.

Emergency call pendants available.





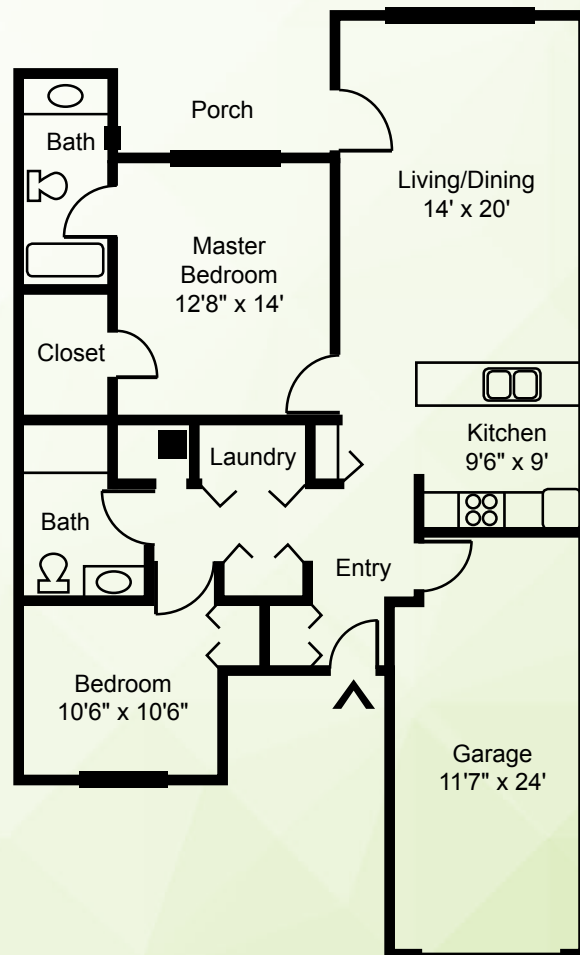
Phase I Villa

2 Bedrooms | 2 Bath
1,250 sq. ft.

Monthly Service Fee Inside Villas
\$1,588/Month

Monthly Service Fee Outside Villas
\$1,853/Month

No entrance or second person fee.



Villa# _____

1st Preference

2nd Preference



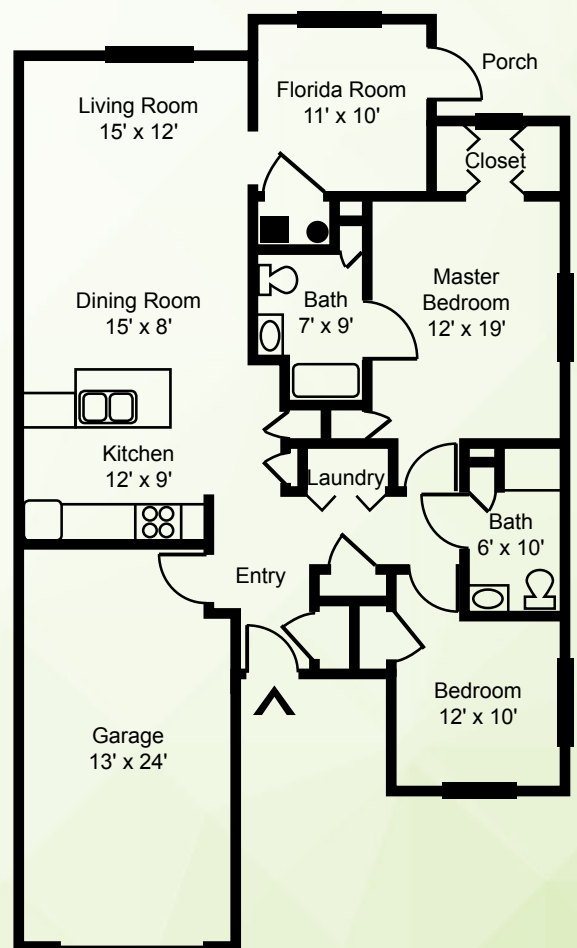
Phase II Villa

2 Bedrooms | 2 Bath
1,400 sq. ft.

Monthly Service Fee Inside Villas
\$1,853/Month

Monthly Service Fee Outside Villas
\$2,118/Month

No entrance or second person fee.



Villa# _____

1st Preference

2nd Preference



Phase II Duplex

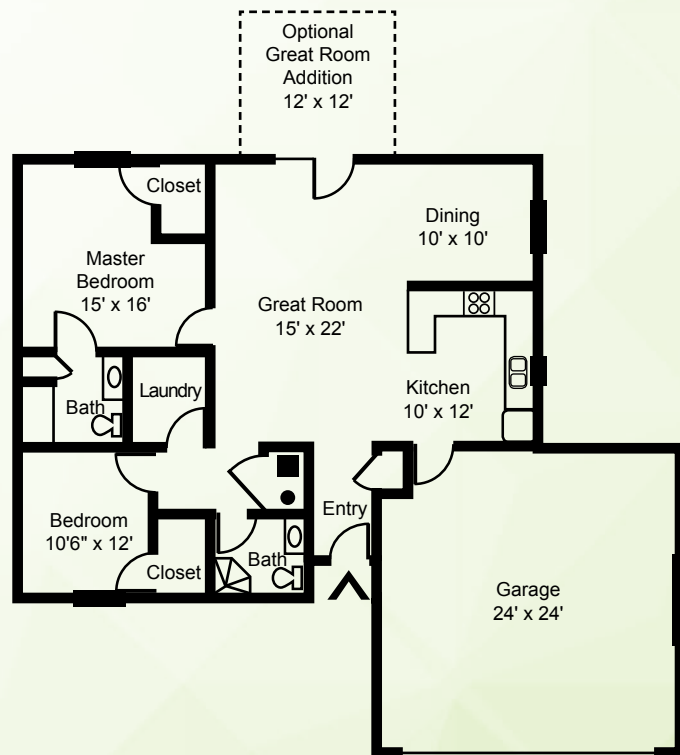
2 Bedrooms | 2 Bath

1,420 sq. ft.

Monthly Service Fee All Villas

\$2,448/Month

No entrance or second person fee.



Villa# _____

1st Preference

2nd Preference

SCOTTISH RITE

Apartments



Scottish Rite offers studios, one bedroom, and two bedroom apartments, including gathering areas, a library and attached fitness center. Additional on-site amenities include an ice cream parlor, general store, salon, campus events and activities, life-long learning programs, and wellness classes.

Rates include:

- \$295 monthly meal credit
- Stainless steel kitchen appliances
- Utilities
 - Gas, Electric, Trash
- Housekeeping service
- Wireless internet
- Direct TV
- Washer and dryer in each apartment
- 24-hour security
- Access to all campus activities, clubs, organizations and events

Telephone Fee: \$13.00/month

Emergency Call Pendants included.





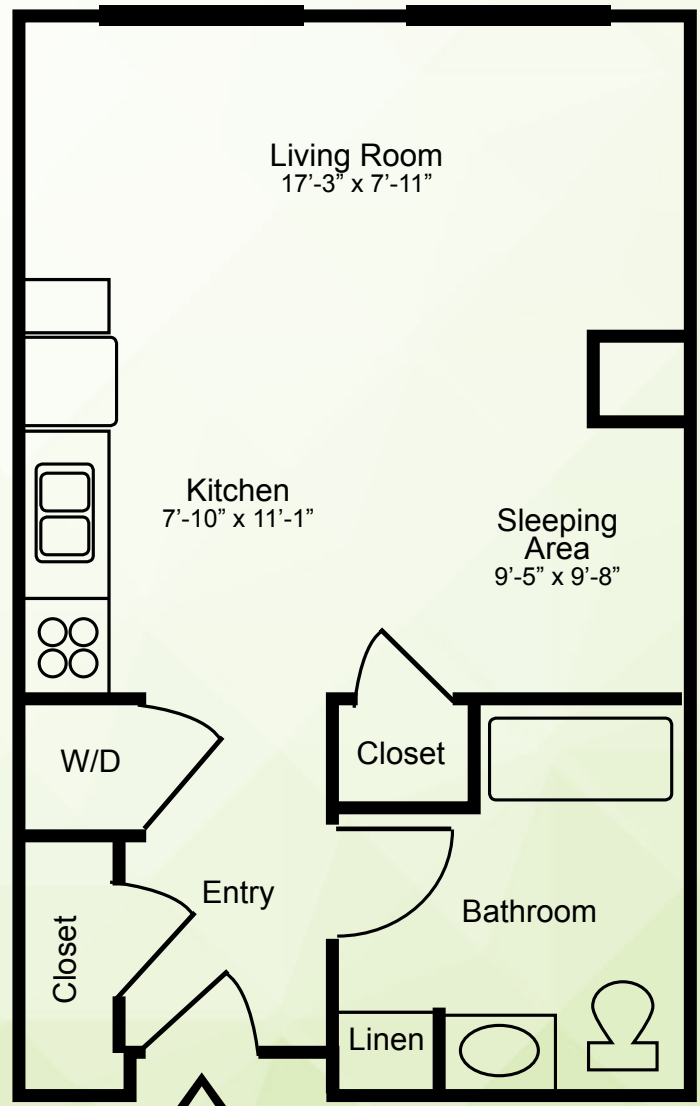
Studio Apartment Floor Plan A

Studio | 530 Square Feet
 Without Balcony - **\$1,672/month**
 With Balcony - **\$1,777/Month**

Second Person Occupancy:
\$575/Month

Apartment # _____

- 1st Preference
- 2nd Preference

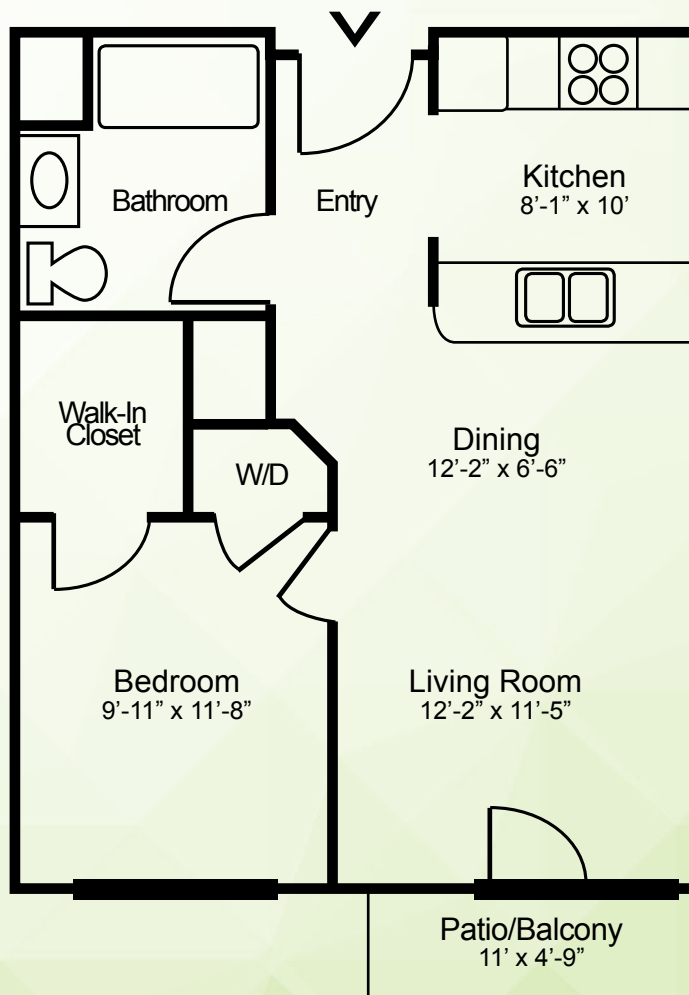




One Bedroom Apartment Floor Plan E

1 Bedroom
677 Square Feet
\$2,195/month

Second Person Occupancy
\$575/month



Apartment # _____

- 1st Preference
- 2nd Preference



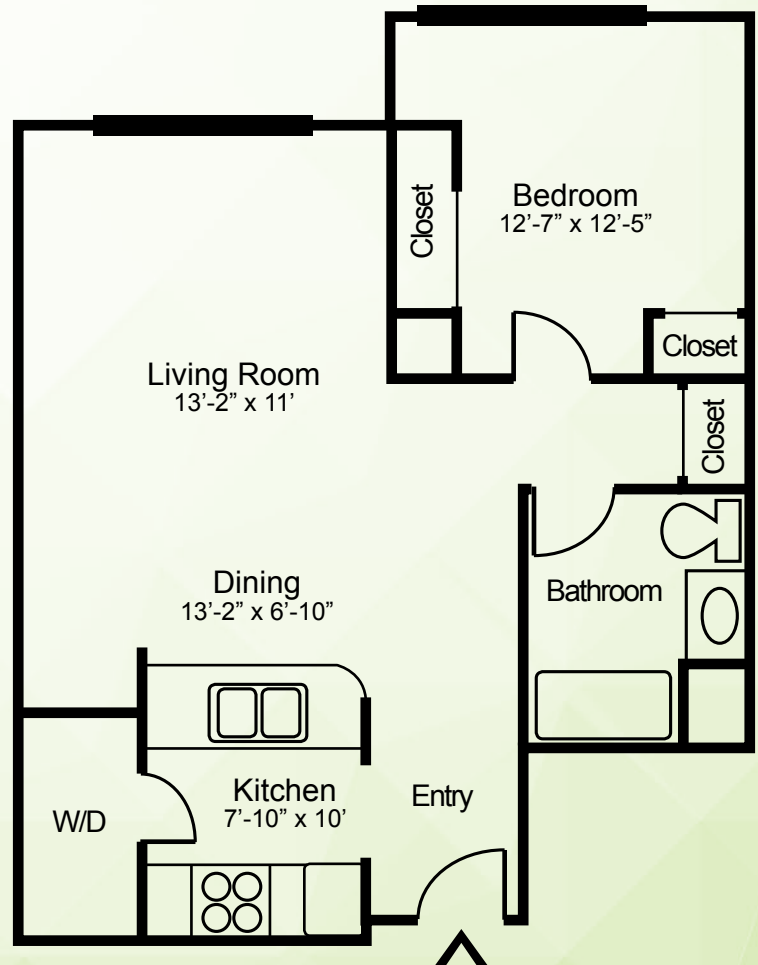
One Bedroom Apartment Floor Plan D

1 Bedroom
810 Square Feet
Without Balcony - \$2,090/month
With Balcony - \$2,195/month

Second Person Occupancy
\$575/month

Apartment # _____

- 1st Preference
- 2nd Preference





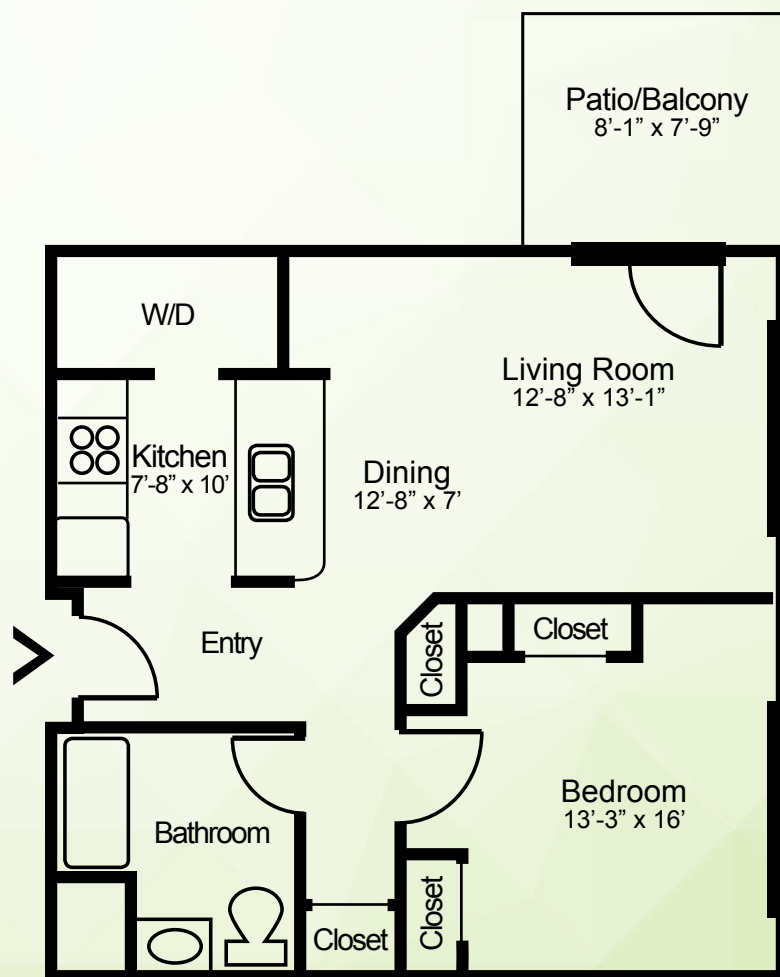
One Bedroom Apartment Floor Plan F

1 Bedroom
875 Square Feet
\$2,195/month

Second Person Occupancy
\$575/month

Apartment # _____

- 1st Preference
- 2nd Preference





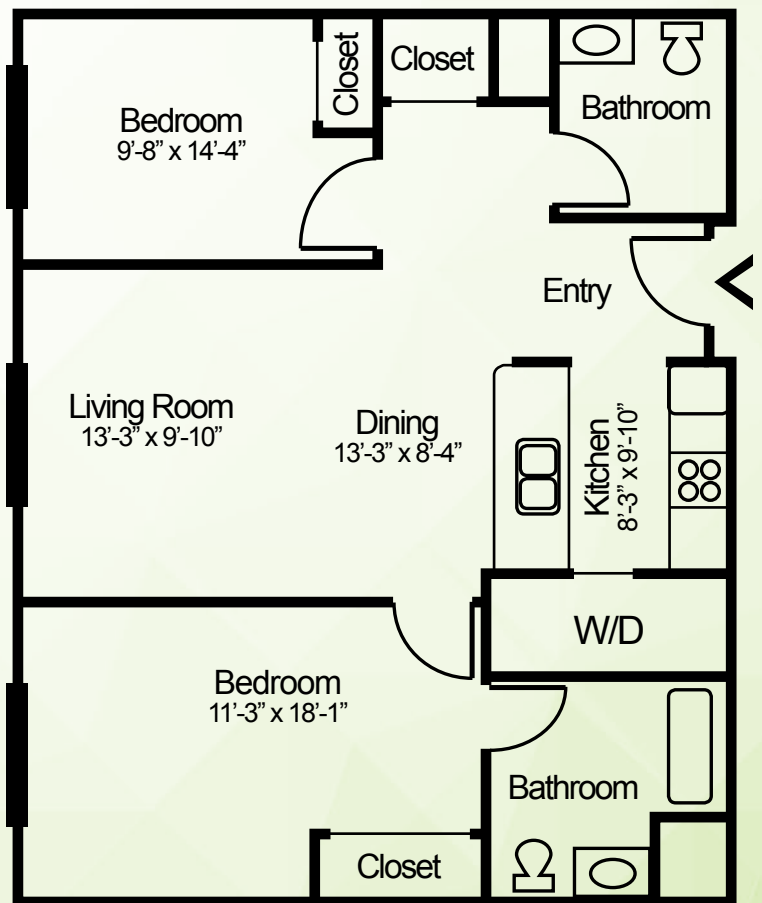
Two Bedroom Apartment Floor Plan G

2 Bedroom
1,067 Square Feet
Without Balcony - \$2,822/month
With Balcony - \$2,926/month

Second Person Occupancy
\$575/month

Apartment # _____

- 1st Preference
- 2nd Preference





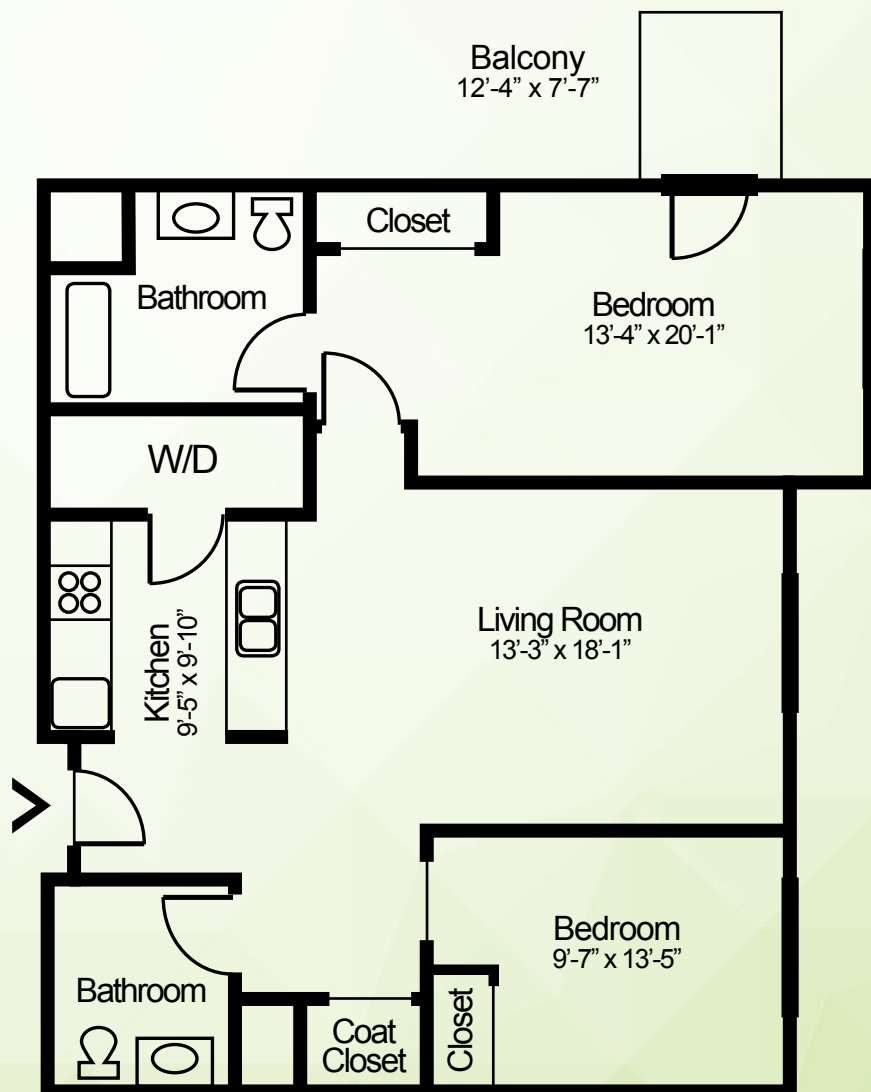
Two Bedroom Apartment Floor Plan H

2 Bedroom
1,134 Square Feet
\$2,926/month

Second Person Occupancy
\$575/month

Apartment # _____

- 1st Preference
- 2nd Preference



IREDELL GARDENS

Apartments



Iredell Gardens features affordable one and two-bedroom floor plans that help you maintain an independent lifestyle while enjoying all the campus has to offer. Take in the pulse of the community and be active as much or as little as you like. There is always something exciting happening.

Rates include:

- \$295 monthly meal credit
- Appliances
- Utilities
 - Gas, Electric, Trash
- Housekeeping service
- Wireless internet
- Direct TV
- Washer and dryer on each floor
- 24/hour security
- Access to all campus activities, clubs, organizations and events

Telephone Fee: \$13.00/month

Emergency Call Pendants included.



One Bedroom Apartment

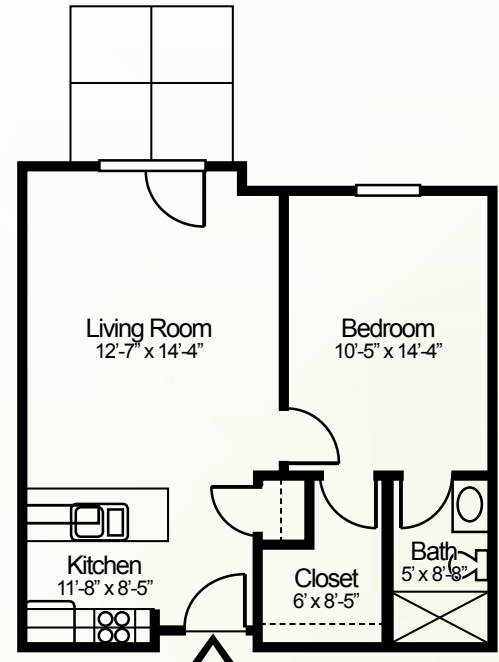
610 Square Feet

\$2,208/Month

Second Person Occupancy: \$575/Month

Apartmenty# _____

- 1st Preference
- 2nd Preference



Two Bedroom Apartment

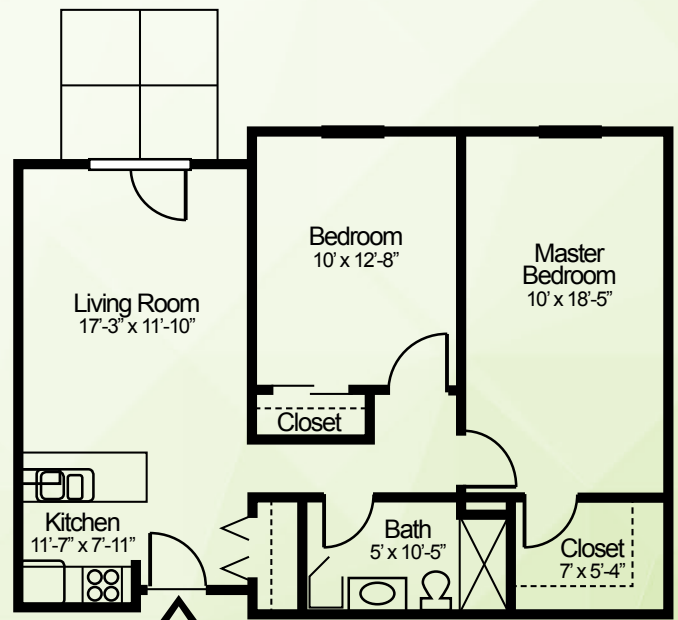
800 Square Feet

\$2,787/Month

Second Person Occupancy: \$575/Month

Apartmenty# _____

- 1st Preference
- 2nd Preference



Compare Your Costs

Monthly Expenses	SMC	Your Current Costs
Mortgage/Rent Payment	\$1,588 - \$2,926	_____
Homeowner's Insurance	Included	_____
Real Estate Property Taxes	Included	_____
Utilities:	Included	_____
Gas (excluding villas)	Included	_____
Electric (excluding villas)	Included	_____
Water/Sewer	Included	_____
Trash Removal	Included	_____
Basic Cable Television	Included	_____
Local Phone Service (excluding villas)	Included	_____
Evening Meal	Included	_____
Housekeeping/Laundry	Included	_____
Home Maintenance	Included	_____
Lawn Care/Equipment	Included	_____
Snow Removal	Included	_____
Parking Space	Included	_____
Fitness Room/Personal Trainer	Included	_____
Daily Social Activities	Included	_____
24-Hour Security	Included	_____

Springfield Masonic Community is vibrant community that ignites an active lifestyle and empowers those who are young at heart. We offer a variety of financial packages, please consult with your Sales Representative for additional assistance.



Prices effective 01/01/19

2655 W. National Road, Springfield, Ohio 45504
www.smcoho.org | (937) 525-3067



WHERE LIFESTYLE SPARKS NEW BEGINNINGS

